

Estimates of Your Tree Benefits

More than an investment in beauty and shade, your trees work hard for you!

Prepared exclusively for: White's Woods Nature Center

Estimated Tree Cover on your property: **95%**

Estimated Land Cover	acres
Grass	10.22
Trees	220.28
Impervious	0.0
Bare ground	1.86
Water	0.0
Total	232.36

Storm water runoff avoided
each year by your trees:
207,540 gallons @ \$1855

Carbon Dioxide absorbed
each year by your trees:
1,102 tons @ \$25,641

Carbon Dioxide already
stored in your trees:
27,688 tons @ \$643,945

Air pollution removed each year by your trees:

	pounds	@	value
Carbon Monoxide	154		\$3
Nitrogen Dioxide	1,333		\$16
Ozone	10,686		\$1,180
Sulfur Dioxide	2,129		\$10
Particulate matter (less than 2.5 microns)	973		\$4,109
Particulate matter (2.5 to 10 microns)	1,735		\$170
Total Pollutants	17,010		\$5,488

Trees remove pollutants from the air.

Poor air quality is a common problem in many urban areas. It can lead to health problems, landscape damage, degraded ecosystems, and reduced visibility.

- *Carbon monoxide (CO)* interferes with oxygen delivery within the human body.
- *Nitrogen dioxide (NO₂)* contributes to ozone and fine particle pollution and is linked to adverse respiratory system effects.
- *Ozone (O₃)* is harmful near the ground and can worsen lung diseases such as asthma, particularly in children.
- *Particulate matter (PM)*, or particle pollution, is a complex mixture of extremely small particles and liquid droplets that can cause serious health effects.
- *Sulfur Dioxide (SO₂)* can make breathing difficult. It contributes to acid rain and can react with other compounds in the atmosphere to form visibility-reducing haze.

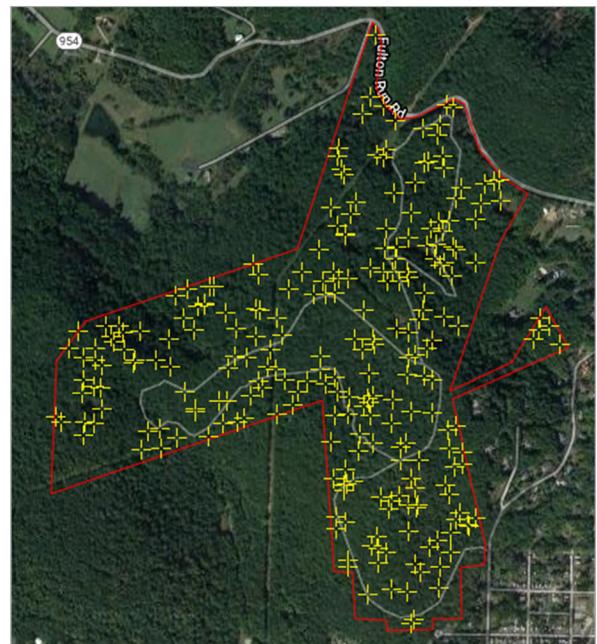
Trees absorb carbon dioxide from the air and store it as wood.

Carbon dioxide (CO₂) is a greenhouse gas that traps heat in the atmosphere.

- It enters the atmosphere through burning fossil fuels (coal, natural gas, and oil), solid waste, trees and wood products, and also as a result of certain chemical reactions (e.g., manufacture of cement).

In addition, your trees:

- Enhance property values
- Lower summer air temperatures
- Improve health and well-being
- Provide wildlife habitat
- Reduce storm water runoff
- Provide aesthetic benefits



i-Tree Canopy random sample points

For more information, please contact us:

The Davey Tree Expert Company

1500 N. Mantua Street
Kent OH, 44240

1-800-447-1667
www.davey.com



Powered by: i-Tree and the Davey Institute
i-Tree represents cutting-edge, peer reviewed, USDA Forest Service research packaged into a suite of software tools and web applications easily used by everyone. www.itreetools.org



A Division of the Davey Tree Expert Company